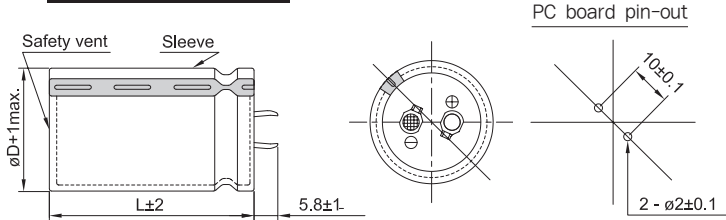


AVAILABLE TERMINALS

(mm)

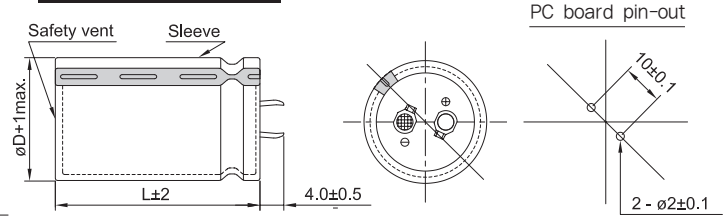
**D =  $\phi$  22 to  $\phi$  40mm**

Type : VN



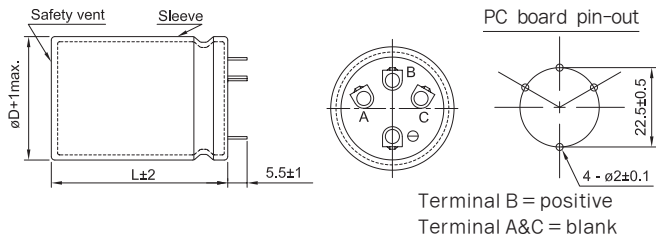
**D =  $\phi$  22 to  $\phi$  40mm**

Type : VS



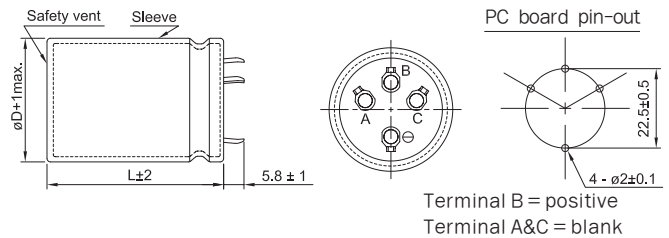
**D =  $\phi$  35 to  $\phi$  40mm**

Type : VR (4 Terminals)



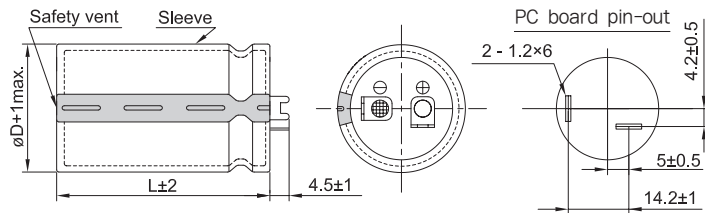
**D =  $\phi$  35 to  $\phi$  40mm**

Type : VN4T (4 Terminals)



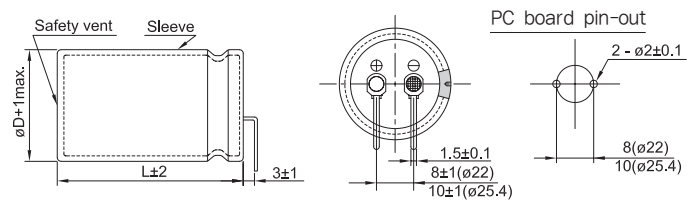
**D =  $\phi$  35 to  $\phi$  40mm**

Type : LI



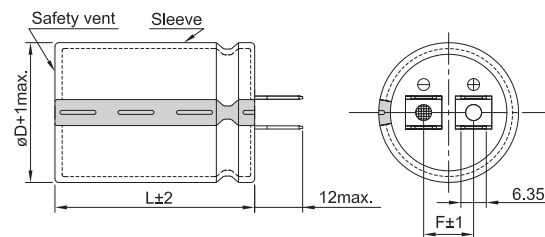
**D =  $\phi$  22 to  $\phi$  25.4mm**

Type : VL



**D =  $\phi$  35 to  $\phi$  50mm**

Type : LR



**CAUTION**

Use the blank terminals for mechanical support only.  
The blank terminals must not be connected any copper on PC board.  
Be sure to electrically isolate from negative or positive terminals.

$\phi$ D	35	40	50
F	12.5	14	