

## RFC(RWF) Series

• 85°C 5,000Hrs assured.

- Non-solvent proof.
- High ripple capability.
- Long life.
- For UPS, Industrial Inverter
- RoHS compliant.
- Halogen-free capacitors are also available.



## SPECIFICATIONS

Item	Characteristics
Rated Voltage Range	350 ~ 450 V <sub>DC</sub>
Operating Temperature Range	-25 ~ +85°C
Capacitance Tolerance	±20%(M) (at 20°C, 120Hz)
Leakage Current	I = 0.02CV or 5mA, whichever is smaller. Where, I: Leakage current (µA) C: Nominal capacitance (µF) V: Rated voltage (V <sub>DC</sub> ) (at 20°C, 5 minutes)
Dissipation Factor (Tanδ)	0.25max. (at 20°C, 120Hz)
Insulation Withstanding Voltage	When a voltage of 2,000V <sub>AC</sub> is applied for one minute between the terminals shorted each other and the mounting clamp on the insulating sleeve covering the case, there shall not be electrical damage.
Load Life	After the capacitors are subjected to DC voltage with the rated ripple current applied for 5,000 hours at 85°C, the following specifications shall be satisfied when the capacitors are restored to 20°C. The sum of DC voltage and peak AC voltage must not exceed the full rated voltage of the capacitor. Capacitance change ≤ ±30% of the initial value Tanδ ≤ 300% of the initial specified value Leakage current ≤ The initial specified value
Shelf Life	The following specifications shall be satisfied when the capacitors are restored to 20°C after exposing them at 85°C for 500 hours without voltage applied. The rated voltage shall be applied to the capacitors for a minimum of 30 minutes, at least 24 hours and not more than 48 hours before measurements. Capacitance change ≤ ±20% of the initial value Tanδ ≤ 300% of the initial specified value Leakage current ≤ The initial specified value
Others	Satisfied characteristics KS C IEC 60384-4

## RATED RIPPLE CURRENT MULTIPLIERS

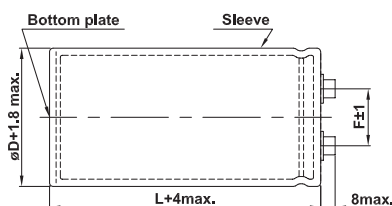
Frequency Multipling Factor

Frequency(Hz)	60	120	300	1k	3k
Factor	0.8	1.0	1.1	1.3	1.4

## DIMENSIONS OF RFC(RWF) Series

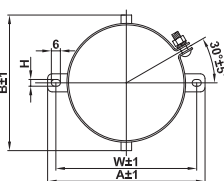
Unit(mm)

Marking : BLACK SLEEVE, GOLD INK



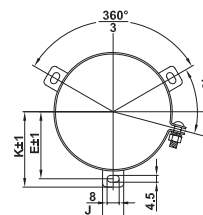
- <Screw specifications>  
 øD = ø 63.5 ~ ø 89  
 • Plus hexagon-headed screw:  
 M5×0.8×12  
 • Maximum screw tightening  
 torque: 3.23N·m (33kg·cm)

### B type mounting clamp



øD	A	B	W	H	F
63.5	90	75	80	4.5	28.0
76.5	104.5	90	93.5	4.5	31.5

### C type mounting clamp



øD	E	K	J	F
63.5	38.1	43.5	14	28.0
76.5	44.5	50.0	14	31.5
89	50.8	56.5	16	31.5



# LARGE SIZED ALUMINUM ELECTROLYTIC CAPACITORS

## RATINGS OF RFC(RWF) Series

$\mu F$	V <sub>DC</sub> ∅ D	350			400			450			
		63.5	76.5	89	63.5	76.5	89	63.5	76.5	89	
2,700								63.5 × 120 10.1			
3,300					63.5 × 120 11.1			63.5 × 130 11.7			
3,900		63.5 × 120 12.1			63.5 × 130 12.7			63.5 × 160 13.8	76.5 × 120 13.4		
4,700		63.5 × 130 14.0			63.5 × 160 15.2	76.5 × 120 14.7		63.5 × 190 16.7	76.5 × 130 15.5		
5,600		63.5 × 160 16.6	76.5 × 120 16.1		63.5 × 190 18.2	76.5 × 130 16.9			76.5 × 160 18.3		
6,800		63.5 × 190 20.0	76.5 × 130 18.6			76.5 × 160 20.2			76.5 × 170 20.7		
8,200			76.5 × 160 22.2			76.5 × 170 22.8				89 × 160 24.1	
10,000			76.5 × 170 25.2				89 × 160 26.6			89 × 170 27.8	
12,000				89 × 160 29.1			89 × 170 30.0				
15,000				89 × 190 35.7	← Case Size ∅ D × L (mm) ← Rated Ripple Current (Arms/85°C, 120Hz)						

Note: When long life performance is required in actual use, the rms ripple current has to be reduced.