

## RFA Series

• 85°C 20,000Hrs assured.

- Non-solvent proof.
- High ripple capability.
- Long Life
- For Elevator, Industrial Inverter
- RoHS compliant.
- Halogen-free capacitors are also available.



## SPECIFICATIONS

Item	Characteristics
Rated Voltage Range	350 ~ 500 V <sub>DC</sub>
Operating Temperature Range	-25 ~ +85°C
Capacitance Tolerance	±20% (M) (at 20°C, 120Hz)
Leakage Current	I = 0.02CV or 5mA, whichever is smaller. Where, I: Max. Leakage current (µA) C: Nominal capacitance (µF) V: Rated voltage (V <sub>DC</sub> ) (at 20°C, 5 minutes)
Dissipation Factor (Tanδ)	0.25max. (at 20°C, 120Hz)
Temperature Characteristics (Capacitance change ratio)	C(-25°C)/C(20°C) ≥ 0.7 (at 120Hz)
Insulation Withstanding Voltage	When a voltage of 2,000V <sub>AC</sub> is applied for one minute between the terminals shorted each other and the mounting clamp on the insulating sleeve covering the case, there shall not be electrical damage.
Load Life	The following specifications shall be satisfied when the capacitors are restored to 20°C. after subjected to DC voltage with the rated ripple current is applied 20,000 hours at 85°C. Capacitance change ≤ ±30% of the initial value Tanδ ≤ 300% of the initial specified value Leakage current ≤ The initial specified value
Shelf Life	The following specifications shall be satisfied when the capacitors are restored to 20°C after exposing them at 85°C for 500 hours without voltage applied. The rated voltage shall be applied to the capacitors for a minimum of 30 minutes, at least 24 hours and not more than 48 hours before the measurements. Capacitance change ≤ ±20% of the initial value Tanδ ≤ 300% of the initial specified value Leakage current ≤ The initial specified value
Others	Satisfied characteristics KS C IEC 60384-4

## RATED RIPPLE CURRENT MULTIPLIERS

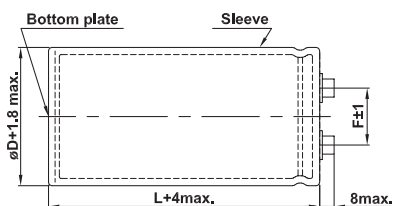
Frequency Multiplying Factor

Frequency(Hz)	60	120	300	1k	3k
Factor	0.8	1.0	1.1	1.3	1.4

## DIMENSIONS OF RFA Series

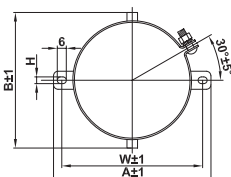
Unit (mm)

Marking : BLACK SLEEVE, GOLD INK



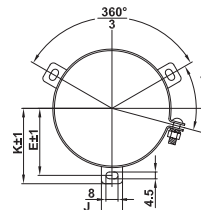
- <Screw specifications>  
 øD = ø 63.5 ~ ø 89  
 • Plus hexagon-headed screw: M5×0.8×12  
 • Maximum screw tightening torque: 3.23N·m (33kg·cm)

### B type mounting clamp



øD	A	B	W	H	F
63.5	90	75	80	4.5	28.0
76.5	104.5	90	93.5	4.5	31.5

### C type mounting clamp



øD	E	K	J	F
63.5	38.1	43.5	14	28.0
76.5	44.5	50.0	14	31.5
89	50.8	56.5	16	31.5



# LARGE SIZED ALUMINUM ELECTROLYTIC CAPACITORS

## RATINGS OF RFA Series

$\mu F$	Vdc	350			400			450			
		$\phi$ D	63.5	76.5	89	63.5	76.5	89	63.5	76.5	89
2,200								63.5 × 120 9.1			
2,700					63.5 × 120 10.1			63.5 × 130 10.6	76.5 × 120 11.2		
3,300		63.5 × 120 11.1			63.5 × 130 11.7			63.5 × 160 12.7	76.5 × 130 13.0		
3,900		63.5 × 130 12.8			63.5 × 160 13.5	76.5 × 120 14.7		63.5 × 170 14.4			
4,700		63.5 × 160 15.2	76.5 × 120 14.7		63.5 × 170 15.8	76.5 × 130 15.5			76.5 × 160 16.7		
5,600		63.5 × 170 17.3	76.5 × 130 16.9		63.5 × 190 18.2	76.5 × 160 18.3			76.5 × 170 21.1	89 × 160 19.9	
6,800		63.5 × 190 20.0	76.5 × 160 20.2			76.5 × 170 21.0				89 × 170 23.0	
8,200			76.5 × 170 23.1				89 × 160 24.1			89 × 190 26.4	
10,000				89 × 160 26.6			89 × 190 29.1				
12,000				89 × 190 32.0	← Case Size $\phi$ D × L (mm)					← Rated Ripple Current (Arms/85°C, 120Hz)	

$\mu F$	Vdc	500		
		$\phi$ D	63.5	76.5
1,200		63.5 × 90 5.3		
1,500		63.5 × 100 6.3		
1,800		63.5 × 120 7.4		
2,200			76.5 × 110 9.0	
2,700			76.5 × 130 10.3	
3,300			76.5 × 140 11.9	
3,900			76.5 × 150 13.3	
4,700				89 × 150 15.3
5,600				89 × 170 18.2
6,800				89 × 190 21.0

Note: When long life performance is required in actual use, the rms ripple current has to be reduced.